

GREG

PRODUCTION NOTES

12/7/95

CASTAIC LAKE

P.O. BOX 397
CASTAIC, CA 91310

JOYCE GIBSON PARK SUPERINTENDENT

(805) 257-4050

LINDA TORRES PUBLIC RELATIONS

(805) 257-3759 FAX

MIKE COASH LAKE MANAGER/LIFEGUARD SUPERVISOR

STEVE HENDRICKSON ASST. LAKE MGR./LIFEGUARD SUPERVISOR

1. In meeting on 12/6/95 with Joyce Gibson and Mike Coash at the location, the following points were discussed and agreed to:

Although this location is technically out of the 30 mile studio zone, a special amendment to the zone limits has been agreed to and for all filming purposes, this location is considered within the zone.

I have placed a hold on 1/29 thru 2/8/96, with a shoot day on 2/2/96.

The location site rental is paid thru the County/City Permit Office. Attached is a budget estimate reflecting these costs.

Film company can trim trees and branches at location, bring in our set dressing trees, cover the walkways with dirt, clean algae out of lake in area where submarine will enter water and submerge, place submarine on hill and rig underground apparatus to pull submarine back into water, dredge a trench in the water for the submarine, add dirt to the hillside to level off slope of the hill where submarine will slide into water, place pontoon boats in the water for the purpose of placing lighting instruments and utilize the two parking lots adjacent to the location for equipment parking and base camp.

All areas utilized by the film company must be returned to condition found in prior to filming.

Barrels lighted with some type of flammable substance can be used on the lake as back-lighting provided that approval is obtained from:

State of California Water Resources Board Bruce Jackson/Joel Quintero, (805) 257-3610 and the Department of Fish and Game, Marty Wall, (310) 590-5132. AFTER HOURS # SAETO - (916) 445-0045
CA.

I spoke with Quintero and he has approved it subject to Fish and Game approval. I spoke with Marty Wall and he will not approve diesel fuel use in the water because of environmental problems. Film company has sole and ultimate liability for any environmental problems which occur while we are filming WHETHER OR NOT IT IS OUR FAULT. I have put Marty in touch with Marty Wall and they will attempt to use propane or some water soluble fuel.

We may also place lighting instruments across the lake on the opposite side of the location.

2. General Notes

The lake fluctuates a maximum of approximately 4-5 feet. Attached is an approximated plot plan of the slope of the hill and the contour of the water-bottom. The approximate depth of the lake at the middle is 50 feet.

Marty Bresin has seen the location and can perform his SFX at the location. He declined the invitation to scout the location again with me. Gary Kibbe has seen location on his own with his crew and has no problem or special requirements for the location department (EXCEPT "It sure would be easier on my guys if we could do it on the side of the lake directly opposite the location." Told him he might possible check with the director, prod. designer, and SFX coord. who all like the present location.

Boats are available for rental from Marine Specialties (32265 Castaic Rd) Dan Holiday/Lee James/Byron Manley at (805) 257-6310. Spoke to Byron and Pontoon boats are available (27' by 12') for \$60/Hour and small fishing work boats, (12' by 6') for \$15/hour. This may not be best price and is probably SFX responsibility.

Mileage is approx 37 miles one way.

Lifeguards are \$24/hour with no OT. Lifeguard at site wants at least one lifeguard any time any one of our people is in the water and may require two. He also wants four lifeguards on shoot day. Pressure from the Permit office may be helpful here.

We can raise the level of the lake if we need to by buying water from the water district. Researching price now but it is expensive. Raising it one foot takes approx a week. Seems impractical.

One administrative person must be on site with us at all times at approx. \$15/hr.

They require 2 or their park police on shoot day at \$37/hr. We can use CAST security on premises for crew and equipment security.

DATE: NOVEMBER 15, 1995
PLACE: CASTAIC LAKE 31849 N. LAKE HUGHES RD.
LOCATION: "EXT. SUBMARINE"
THOMAS BROS: PG. 4369 H 6

DIRECTIONS FROM OFFICE:

- MAKE A **RIGHT** ON GOWER AND GO NORTH TO FRANKLIN.
- TURN **LEFT** ON FRANKLIN AND GET ON THE HOLLYWOOD FWY (101) NORTH.
- TAKE THE HOLLYWOOD FWY (101) NORTH TO THE GOLDEN STATE FWY (5) NORTH.
- TAKE THE GOLDEN STATE FWY (5) NORTH APPROXIMATELY 26 MILES TO THE LAKE HUGHES RD./CASTAIC EXIT.
- **MAKE A **RIGHT** ON LAKE HUGHES ROAD AND GO APPROXIMATELY 1 MILE TO THE DEPARTMENT OF WATER RESOURCES OFFICE ON YOUR LEFT HAND SIDE.

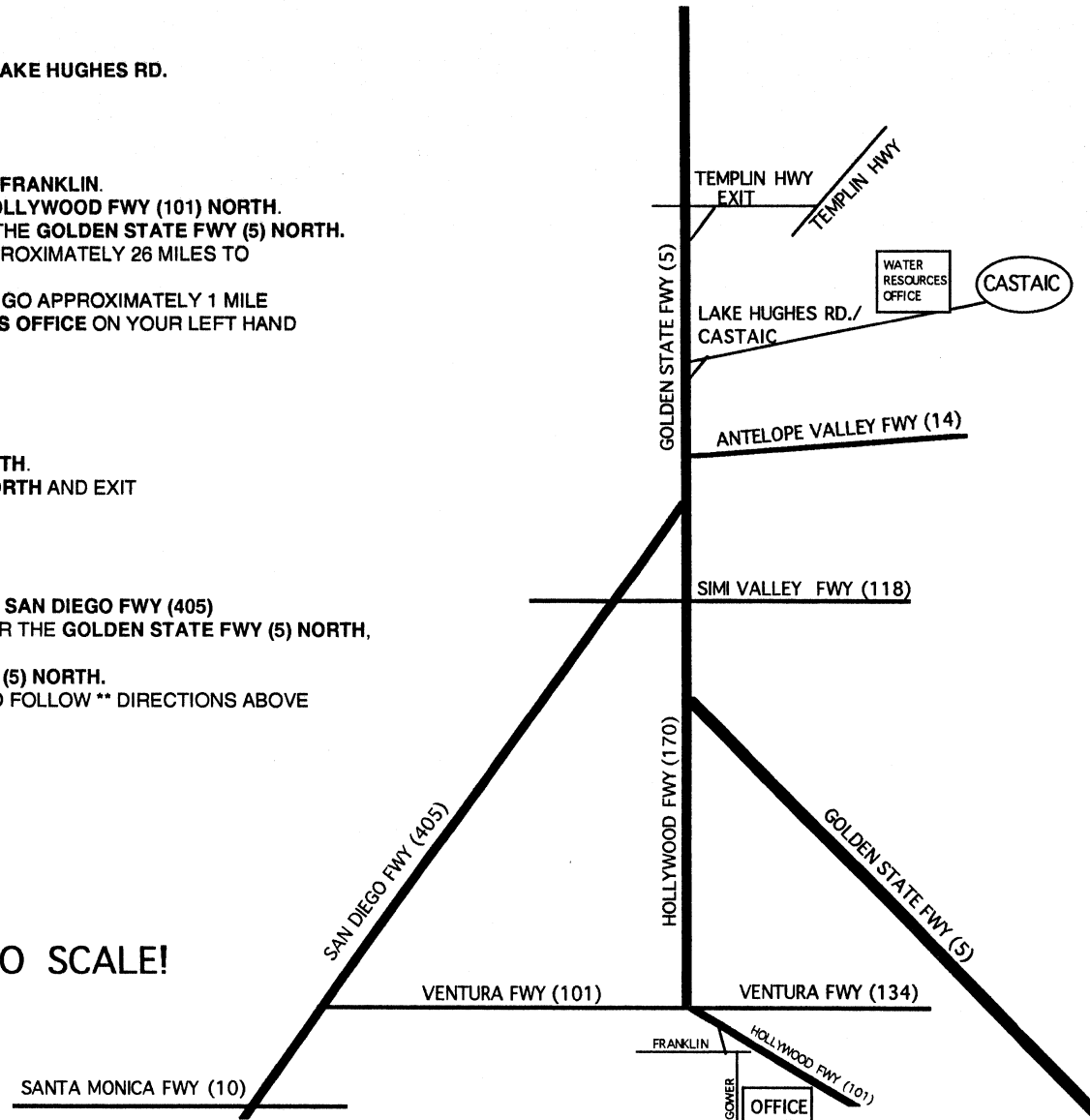
DIRECTIONS FROM WEST SIDE:

- TAKE THE SAN DIEGO FWY (405) NORTH.
- IT BECOMES THE GOLDEN STATE FWY (5) NORTH.
- CONTINUE ON THE GOLDEN STATE FWY (5) NORTH AND EXIT ON LAKE HUGHES RD./CASTAIC.
- FOLLOW ** DIRECTIONS ABOVE

DIRECTIONS FROM VALLEY:

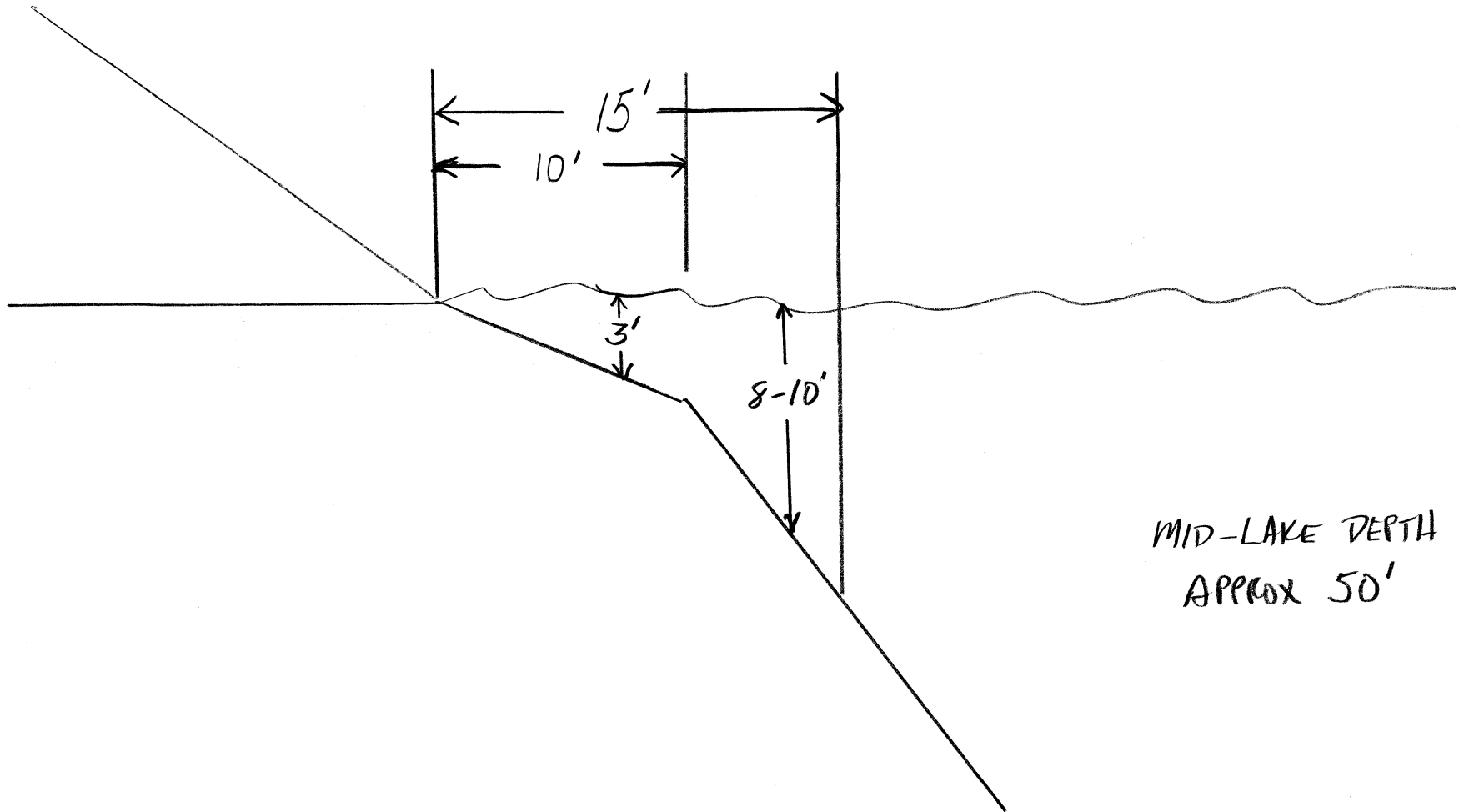
- TAKE THE VENTURA FWY (101) TO EITHER THE SAN DIEGO FWY (405) NORTH, THE HOLLYWOOD FWY (170) NORTH, OR THE GOLDEN STATE FWY (5) NORTH, WHICHEVER IS CLOSER FOR YOU.
- THESE ALL BECOME THE GOLDEN STATE FWY (5) NORTH.
- TAKE THE GOLDEN STATE FWY (5) NORTH AND FOLLOW ** DIRECTIONS ABOVE

N
↑
MAP NOT TO SCALE!



LAKE CASTAIC

NOTE: LAKE FLUCTUATES A MAXIMUM
OF APPROX. 4 TO 5 FEET.



MID-LAKE DEPTH
APPROX 50'